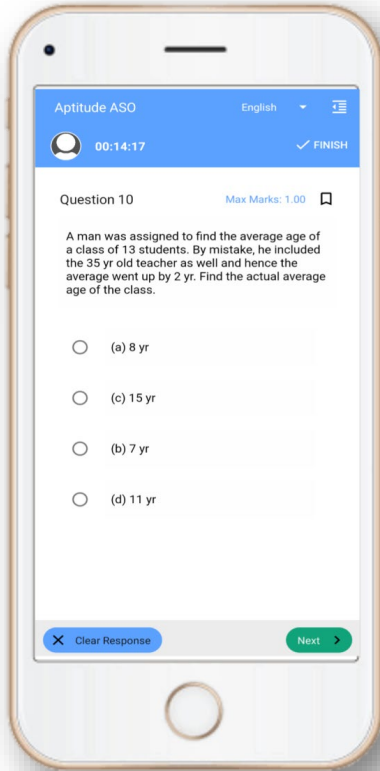


OAVS Exam- Mock Test, PYQS , Note, E-Books

Get Now On [App](#)



Tech Of World

Download App



[Click Here](#)

 YouTube- [Click Here](#)

 Telegram- [Click Here](#)

 Facebook- [Click Here](#)





ODISHA ADARSHA VIDYALAYA SANGATHAN

Roll No:	XXXXXXXX
Participants Name:	XXXXXXXX
Test Center Name:	Glorious Infotech
Test Date:	11/03/2017
Test Time:	9:00 AM - 12:30 PM

Section : Language Proficiency Test - General English

Q.1 Giving home work is important because:

Question ID : 473941414

Ans 1.

Status : Answered

it keeps the students entertained

Chosen Option : 2

 2.

it develops the habit of self-study

 3.

Homework encourages students to waste time at home

 4.

it keeps the students busy at home

Q.2 Shakespeare's has written his sonnets in _____ lines.

Question ID : 473941409

Ans 1. 16

Status : Answered

 2. 12

Chosen Option : 2

 3. 14 4. 10

Comprehension:

Read the following passage and answer the question given below.

Persuasion is the art of convincing someone to agree with your point of view. According to the ancient Greek philosopher Aristotle, there are three basic tools of persuasion: ethos, pathos, and logos. Ethos is a speaker's way of convincing the audience that she is a credible source. An audience will consider a speaker credible if she seems trustworthy, reliable.

and sincere. This can be done in many ways. For example, a speaker can develop ethos by explaining how much experience or education she has in the field. After all, you would be more likely to listen to advice about how to take care of your teeth from a dentist than a firefighter. A speaker can also create ethos by convincing the audience that she is a good person who has their best interests at heart. If an audience cannot trust you, you will not be able to persuade them. Pathos is a speaker's way of connecting with an audience's emotions. For example, a speaker who is trying to convince an audience to vote for him might say that he alone can save the country from a terrible war. These words are intended to fill the audience with fear, thus making them want to vote for him. Similarly, a charity organization that helps animals might show an audience pictures of injured dogs and cats. These images are intended to fill the viewers with pity. If the audience feels bad for the animals, they will be more likely to donate money. Logos is the use of facts, information, statistics, or other evidence to make your argument more convincing. An audience will be more likely to believe you if you have data to back up your claims. For example, a commercial for soap might tell you that laboratory tests have shown that their soap kills all 7,000,000 of the bacteria living on your hands right now. This piece of information might make you more likely to buy their brand of soap. Presenting this evidence is much more convincing than simply saying "our soap is the best!" Use of logos can also increase a speaker's ethos; the more facts a speaker includes in his argument, the more likely you are to think that he is educated and trustworthy. Although ethos, pathos, and logos all have their strengths, they are often most effective when they are used together. Indeed, most speakers use a combination of ethos, pathos, and logos to persuade their audiences. The next time you listen to a speech, watch a commercial, or listen to a friend try to convince you to lend him some money, be on the lookout for these ancient Greek tools of persuasion.

SubQuestion No : 3

Q.3 Which of the following is NOT a synonym of the word "credible", used in the passage?

- Ans
- 1. additional
 - 2. dependable

Question ID : 473941404

Status : Answered

Chosen Option : 1

✗^{3.} trustworthy

✗^{4.} reliable

Comprehension:

Read the following passage and answer the question given below.

Persuasion is the art of convincing someone to agree with your point of view. According to the ancient Greek philosopher Aristotle, there are three basic tools of persuasion: ethos, pathos, and logos. Ethos is a speaker's way of convincing the audience that she is a credible source. An audience will consider a speaker credible if she seems trustworthy, reliable, and sincere. This can be done in many ways. For example, a speaker can develop ethos by explaining how much experience or education she has in the field. After all, you would be more likely to listen to advice about how to take care of your teeth from a dentist than a firefighter. A speaker can also create ethos by convincing the audience that she is a good person who has their best interests at heart. If an audience cannot trust you, you will not be able to persuade them. Pathos is a speaker's way of connecting with an audience's emotions. For example, a speaker who is trying to convince an audience to vote for him might say that he alone can save the country from a terrible war. These words are intended to fill the audience with fear, thus making them want to vote for him. Similarly, a charity organization that helps animals might show an audience pictures of injured dogs and cats. These images are intended to fill the viewers with pity. If the audience feels bad for the animals, they will be more likely to donate money. Logos is the use of facts, information, statistics, or other evidence to make your argument more convincing. An audience will be more likely to believe you if you have data to back up your claims. For example, a commercial for soap might tell you that laboratory tests have shown that their soap kills all 7,000,000 of the bacteria living on your hands right now. This piece of information might make you more likely to buy their brand of soap. Presenting this evidence is much more convincing than simply saying "our soap is the best!" Use of logos can also increase a speaker's ethos; the more facts a speaker includes in his argument, the more likely you are to think that he is

educated and trustworthy. Although ethos, pathos, and logos all have their strengths, they are often most effective when they are used together. Indeed, most speakers use a combination of ethos, pathos, and logos to persuade their audiences. The next time you listen to a speech, watch a commercial, or listen to a friend try to convince you to lend him some money, be on the lookout for these ancient Greek tools of persuasion.

SubQuestion No : 4

Q.4 Whenever her child refuses to eat food, Radhika tells, "Raji, you should eat now or else I will take you to the doctor and he will give you an injection." What form of persuasion is Radhika using here?

Question ID : 473941405
Status : Answered
Chosen Option : 4

Ans 1. logos

2. ethos

3.

a combination of ethos, pathos, and logos

4. pathos

Comprehension:

Read the following passage and answer the question given below.

Persuasion is the art of convincing someone to agree with your point of view. According to the ancient Greek philosopher Aristotle, there are three basic tools of persuasion: ethos, pathos, and logos. Ethos is a speaker's way of convincing the audience that she is a credible source. An audience will consider a speaker credible if she seems trustworthy, reliable, and sincere. This can be done in many ways. For example, a speaker can develop ethos by explaining how much experience or education she has in the field. After all, you would be more likely to listen to advice about how to take care of your teeth from a dentist than a firefighter. A speaker can also create ethos by convincing the audience that she is a good person who has their best interests at heart. If an audience cannot trust you, you will not be able to persuade them. Pathos is a speaker's way of connecting with an audience's emotions. For example, a speaker who is trying to convince an audience to vote for him might say that he alone can save the country from a terrible war. These words are intended to fill the audience with fear, thus

making them want to vote for him. Similarly, a charity organization that helps animals might show an audience pictures of injured dogs and cats. These images are intended to fill the viewers with pity. If the audience feels bad for the animals, they will be more likely to donate money. Logos is the use of facts, information, statistics, or other evidence to make your argument more convincing. An audience will be more likely to believe you if you have data to back up your claims. For example, a commercial for soap might tell you that laboratory tests have shown that their soap kills all 7,000,000 of the bacteria living on your hands right now. This piece of information might make you more likely to buy their brand of soap. Presenting this evidence is much more convincing than simply saying “our soap is the best!” Use of logos can also increase a speaker’s ethos; the more facts a speaker includes in his argument, the more likely you are to think that he is educated and trustworthy. Although ethos, pathos, and logos all have their strengths, they are often most effective when they are used together. Indeed, most speakers use a combination of ethos, pathos, and logos to persuade their audiences. The next time you listen to a speech, watch a commercial, or listen to a friend try to convince you to lend him some money, be on the lookout for these ancient Greek tools of persuasion.

SubQuestion No : 5

Q.5 According to the passage, the most effective of persuasion is:

- Ans
- 1. pathos, because human beings are most easily persuaded by emotion
 - 2. logos, because it can also be used to build ethos
 - 3. a combination of ethos, pathos, and logos
 - 4. ethos, because you cannot persuade an audience that does not trust you

Question ID :473941406

Status : Answered

Chosen Option :3

Comprehension:

Read the following passage and answer the question given below.

Persuasion is the art of convincing someone to agree with your point of view. According to the ancient Greek philosopher

Aristotle, there are three basic tools of persuasion: ethos, pathos, and logos. Ethos is a speaker's way of convincing the audience that she is a credible source. An audience will consider a speaker credible if she seems trustworthy, reliable, and sincere. This can be done in many ways. For example, a speaker can develop ethos by explaining how much experience or education she has in the field. After all, you would be more likely to listen to advice about how to take care of your teeth from a dentist than a firefighter. A speaker can also create ethos by convincing the audience that she is a good person who has their best interests at heart. If an audience cannot trust you, you will not be able to persuade them. Pathos is a speaker's way of connecting with an audience's emotions. For example, a speaker who is trying to convince an audience to vote for him might say that he alone can save the country from a terrible war. These words are intended to fill the audience with fear, thus making them want to vote for him. Similarly, a charity organization that helps animals might show an audience pictures of injured dogs and cats. These images are intended to fill the viewers with pity. If the audience feels bad for the animals, they will be more likely to donate money. Logos is the use of facts, information, statistics, or other evidence to make your argument more convincing. An audience will be more likely to believe you if you have data to back up your claims. For example, a commercial for soap might tell you that laboratory tests have shown that their soap kills all 7,000,000 of the bacteria living on your hands right now. This piece of information might make you more likely to buy their brand of soap. Presenting this evidence is much more convincing than simply saying "our soap is the best!" Use of logos can also increase a speaker's ethos; the more facts a speaker includes in his argument, the more likely you are to think that he is educated and trustworthy. Although ethos, pathos, and logos all have their strengths, they are often most effective when they are used together. Indeed, most speakers use a combination of ethos, pathos, and logos to persuade their audiences. The next time you listen to a speech, watch a commercial, or listen to a friend try to convince you to lend him some money, be on the lookout for these ancient Greek tools of persuasion.

SubQuestion No : 6

Q.6 An opposition party leader said, "Under the present government, there has been an increase of 12% in unemployment. I am sure, this will increase by another 10% in next 1 year. When we were in power, we brought 24 new companies and created more than 8450 new jobs. Please trust me, if we are elected again, we will bring 100 more companies to the state and bring the unemployment rate to 0%." Which form of persuasion is the politician using here?

- I. pathos
- II. logos
- III. ethos

- Answers
- 1. I only
 - 2. I, II and III
 - 3. I and II only
 - 4. II and III only

Comprehension:

Read the following passage and answer the question given below.

Persuasion is the art of convincing someone to agree with your point of view. According to the ancient Greek philosopher Aristotle, there are three basic tools of persuasion: ethos, pathos, and logos. Ethos is a speaker's way of convincing the audience that she is a credible source. An audience will consider a speaker credible if she seems trustworthy, reliable, and sincere. This can be done in many ways. For example, a speaker can develop ethos by explaining how much experience or education she has in the field. After all, you would be more likely to listen to advice about how to take care of your teeth from a dentist than a firefighter. A speaker can also create ethos by convincing the audience that she is a good person who has their best interests at heart. If an audience cannot trust you, you will not be able to persuade them. Pathos is a speaker's way of connecting with an audience's emotions. For example, a speaker who is trying to convince an audience to vote for him might say that he alone can save the country from a terrible war. These words are intended to fill the audience with fear, thus making them want to vote for him. Similarly, a charity organization that helps animals might show an audience pictures of injured dogs and cats. These images are intended to

Question ID : 473941408

Status : Answered

Chosen Option : 2

pictures of injured dogs and cats. These images are intended to fill the viewers with pity. If the audience feels bad for the animals, they will be more likely to donate money. Logos is the use of facts, information, statistics, or other evidence to make your argument more convincing. An audience will be more likely to believe you if you have data to back up your claims. For example, a commercial for soap might tell you that laboratory tests have shown that their soap kills all 7,000,000 of the bacteria living on your hands right now. This piece of information might make you more likely to buy their brand of soap. Presenting this evidence is much more convincing than simply saying "our soap is the best!" Use of logos can also increase a speaker's ethos; the more facts a speaker includes in his argument, the more likely you are to think that he is educated and trustworthy. Although ethos, pathos, and logos all have their strengths, they are often most effective when they are used together. Indeed, most speakers use a combination of ethos, pathos, and logos to persuade their audiences. The next time you listen to a speech, watch a commercial, or listen to a friend try to convince you to lend him some money, be on the lookout for these ancient Greek tools of persuasion.

SubQuestion No : 7

Q.7 Passage says that the use of logos can also increase a speaker's ethos. This is because:

- Ans
- 1. a speaker can use misleading or false information
 - 2. it would be difficult to persuade audience who are too frightened or too sad
 - 3. an audience are easily convinced by emotions but not facts
 - 4. an audience trusts a speaker who uses evidence to support his argument

Question ID : 473941407

Status : Answered

Chosen Option : 4

Q.8 Choose the correct alternative that completes the following dialogue:

Arjun: Excuse me, sir. I see you have a room for rent. Is the room available

Banu: (i) Are you interested in renting the room?

Arjun: Yes, but I'd like to take a look at it first.

Banu: Certainly, (ii)

Ans

- 1. (i) It is; (ii) Please come this way.
- 2. (i) I'm not sure (ii) Please come this way.

Question ID : 473941419

Status : Answered

Chosen Option : 1

3.

(i) I'll tell you another day (ii) You are invited to my house.

4.

(i) I'm sorry, it's been taken (ii) Ask your friend to come.

Q.9 She said to me, "Are you coming with us?"

Choose the alternative, which expresses the above active voice sentence in passive voice.

Ans 1.

She asked me if I go with them.

2.

She asked me if I was going with them.

3.

She asked me if I am going with them.

4.

She asked me if I were going with them.

Question ID :473941418

Status : Answered

Chosen Option :2

Q.1 Complete the sentence:

0

"Which of the following _____ as urban legend?"

Ans 1. cannot classify

2. cannot be classify

3. cannot classifying

4. cannot be classified

Question ID :473941422

Status : Answered

Chosen Option :4

Q.1 In which of the following plays, Shakespeare makes fun of the Puritans?

1

Ans 1. Hamlet

2. Twelfth Night

3. Henry IV, Part I

4. The Tempest

Question ID :473941410

Status : Not Attempted

Chosen Option :--

Q.1 Iambic pentameter is a commonly used term English poetry and drama. The term 'iamb' is:

2

Ans 1. Rhyme of each line in poem

2.

the combination vowel and consonant syllables

3.

a metrical unit with unstressed-stressed syllables

4. Imagery used in the poem

Question ID :473941412

Status : Not Attempted and Mark ed For Review

Chosen Option :--

Q.1 "What a delicious dish!"

3

Choose the alternative, which changes the above exclamatory sentence into assertive sentence.

Ans 1. It is a delicious dish.

2. Is it a delicious dish?

3. What is a delicious dish?

Question ID :473941420

Status : Answered

Chosen Option :1

4. It will be a delicious dish.

Q.1 According to Bloom's Taxonomy, intellectual capability is related to:
4

- Ans 1. Psychomotor domain
 2. Affective domain
 3. Cognitive domain
 4. All of the given options

Question ID : 473941413

Status : Answered

Chosen Option : 3

Q.1 Which of the following is the least important while training the students in public speaking and debate?
5

- Ans 1.
 Use language effectively and creatively
 2.
 Control of emotions and expressions
 3.
 Stress, Intonation and Modulation of voice
 4. The concept of the topic

Question ID : 473941415

Status : Answered

Chosen Option : 4

Q.1 Rearrange the following four sentences. (A, B, C and D) into a meaningful paragraph then choose the alternative of the correct sequence.
6

- A) This beautiful lady is actually a witch who has enraptured and bewitched a knight with her beauty.
 B) La Belle Dame Sans Merci is the title of a very popular Ballad, written by John Keats.
 C) She has already saved a number of knights, princes and young warriors like him.
 D) It means The Beautiful Lady without Merci.

The proper sequence should be:

- Ans 1. DABC
 2. CADB
 3. BDAC
 4. BCAD

Question ID : 473941421

Status : Answered

Chosen Option : 3

Q.1 "She has written perfectly wrong answers."
7

This sentence is an example of a/an:

- Ans 1. Oxymoron
 2. Alliteration
 3. Hyperbole
 4. Personification

Question ID : 473941416

Status : Answered

Chosen Option : 3

Q.1 In Poetry, Blank verse refers to:
8

- Ans 1. Poetry with symbolism
 2. Poetry with rhyme
 3. Poetry with epic simile
 4. Poetry without rhyme

Question ID : 473941411

Status : Answered

Chosen Option : 2

Q.1 Choose the alternative, which has grammatically correct sentence.
9

Question ID : 473941423

<p>Ans <input checked="" type="checkbox"/> 1. No sooner had she finished one project then she started working on the next.</p> <p><input checked="" type="checkbox"/> 2. No sooner had she finished one project than she started working on the next.</p> <p><input checked="" type="checkbox"/> 3. No sooner had she finished one project than she will start working on the next.</p> <p><input checked="" type="checkbox"/> 4. No sooner had she finish one project than she started working on the next.</p>	<p>Status : Answered</p> <p>Chosen Option : 1</p>
<p>Q.2 "The principal hesitated to assign the duties to new coach as he was wet behind the ears." 0 Identify the meaning of the idiom: "wet behind the ears."</p> <p>Ans <input checked="" type="checkbox"/> 1. Not very clever</p> <p><input checked="" type="checkbox"/> 2. Wet in the rain</p> <p><input checked="" type="checkbox"/> 3. Inexperienced</p> <p><input checked="" type="checkbox"/> 4. Lethargic</p>	<p>Question ID : 473941417</p> <p>Status : Answered</p> <p>Chosen Option : 3</p>
<p>Section : Language Proficiency Test -Odia</p>	
<p>Q.1 ଜ୍ଞାନପୀଠ ପୁରସ୍କାର କିଏ ପାଇଛନ୍ତି ?</p> <p>Ans <input checked="" type="checkbox"/> 1. କାହ୍ନୁଚରଣ ମହାନ୍ତି</p> <p><input checked="" type="checkbox"/> 2. ମଧୁସୂଦନ ରାଓ</p> <p><input checked="" type="checkbox"/> 3. ରାଧାନାଥ ରାୟ</p> <p><input checked="" type="checkbox"/> 4. ଗୋପୀନାଥ ମହାନ୍ତି</p>	<p>Question ID : 473941435</p> <p>Status : Answered</p> <p>Chosen Option : 4</p>
<p>Q.2 ସନାତନ-ପ୍ରକୃତି ପ୍ରତ୍ୟେକ୍ଷ ଲେଖ ?</p> <p>Ans <input checked="" type="checkbox"/> 1. ସନାତ + ସନ</p> <p><input checked="" type="checkbox"/> 2. ସନା + ତେ</p> <p><input checked="" type="checkbox"/> 3. ସ + ନାତନ</p> <p><input checked="" type="checkbox"/> 4. ସଦା + ତନ</p>	<p>Question ID : 473941434</p> <p>Status : Answered</p> <p>Chosen Option : 1</p>
<p>Q.3 ସୁଯୋଗକୁ ଅପେକ୍ଷା କରିବା ଏହି ଅର୍ଥଟି କେଉଁ ରୂପରେ ?</p> <p>Ans <input checked="" type="checkbox"/> 1. ଓର ଭଣ୍ଡିବା</p> <p><input checked="" type="checkbox"/> 2. ଭବରଖେଳିବା</p> <p><input checked="" type="checkbox"/> 3. ଓର ଦେଖିବା</p> <p><input checked="" type="checkbox"/> 4. ଓଧ ଧରାଇବା</p>	<p>Question ID : 473941429</p> <p>Status : Answered</p> <p>Chosen Option : 1</p>
<p>Q.4 ବନ୍ଧୁ + ଅ = ବନ୍ଧକ 'ଅ' ପ୍ରତ୍ୟେକ୍ଷଟି କେଉଁ ଅର୍ଥରେ ହୋଇଛି ?</p> <p>Ans <input checked="" type="checkbox"/> 1. ବିକାର ଅର୍ଥରେ</p> <p><input checked="" type="checkbox"/> 2. ସ୍ୱାର୍ଥରେ</p> <p><input checked="" type="checkbox"/> 3. ନିବାସ ଅର୍ଥରେ</p> <p><input checked="" type="checkbox"/> 4. ଅପତ୍ୟ ଅର୍ଥରେ</p>	<p>Question ID : 473941428</p> <p>Status : Answered</p> <p>Chosen Option : 3</p>

Q.5 ଓଡ଼ିଆ ସାହିତ୍ୟର ଆଧୁନିକ ଯୁଗର ପ୍ରବର୍ତ୍ତକ କାହାକୁ କୁହାଯାଏ?

Question ID :473941427

Status : Answered

Chosen Option :4

- Ans
- 1. ମଧୁସୂଦନ
 - 2. ରାଧାନାଥ
 - 3. ଗଙ୍ଗାଧର
 - 4. ସୁରେନ୍ଦ୍ର ମହାନ୍ତି

Q.6 ନମ୍ବ ଲିଖିତ ମଧ୍ୟରୁ ଉପଯୁକ୍ତ ଶବ୍ଦ ବାଛି ଶୂନ୍ୟସ୍ଥାନ ପୂରଣ କର।
ତାଷ ଭାରତର _____ ମଠ।

Question ID :473941438

Status : Answered

Chosen Option :1

- Ans
- 1. ବଣିକ
 - 2. ବେପାର
 - 3. ସମ୍ପତି
 - 4. ଆଦାୟ

Q.7 କେଉଁ କାବ୍ୟଟି ଗଙ୍ଗାଧରଙ୍କ ଶ୍ରେଷ୍ଠ କାବ୍ୟ?

Question ID :473941442

Status : Marked For Review

Chosen Option :4

- Ans
- 1. ତପସ୍ବିନୀ
 - 2. କୀର୍ତ୍ତବଧ୍ୟ
 - 3. ଭକ୍ତଲ ଲକ୍ଷ୍ମୀ
 - 4. ପ୍ରଣୟବଲ୍ଲରୀ

Q.8 କେଉଁଠି ଠିକ୍ ?

Question ID :473941443

Status : Answered

Chosen Option :4

- Ans
- 1. ଧରିତ୍ରି
 - 2. ଧରାତ୍ରି
 - 3. ଧରାତ୍ରୀ
 - 4. ଧରିତ୍ରୀ

Q.9 ମହାମଣ୍ଡଳ ଗୀତା ଗ୍ରନ୍ଥର ରଚୟିତା କିଏ?

Question ID :473941433

Status : Marked For Review

Chosen Option :1

- Ans
- 1. ଅରୂପାନନ୍ଦ ଦାସ
 - 2. ଯଶୋବନ୍ତ ଦାସ
 - 3. ଜଗନ୍ନାଥ ଦାସ
 - 4. ଅରକ୍ଷିତ ଦାସ

Q.10 କେଉଁ ଉପନ୍ୟାସଟି ଗୋପିନାଥ ମହାନ୍ତିଙ୍କର ନୁହଁ?

Question ID :473941431

Status : Not Attempted

Chosen Option :--

- Ans
- 1. ଅମୃତର ସତ୍ତାଳ
 - 2. ମାଟି ମଗାଳ
 - 3. ଅଦେଶା ହାତ
 - 4. ପରଜା

Q.11 ଭୌଗଳିକ ଏହାର ପ୍ରକୃତିଟି କଣ?

Question ID :473941430

Ans 1. ଭୂଗୋଳ

2. ଭୂଗୋଳ

3. ଭୌଗଳ

4. ଭୂଗଳ

Status : **Marked For Review**

Chosen Option :1

Q.1
2 ସଜ ଏଥିରେ ଥିବା 'ଜ' ଅକ୍ଷରରେ କେଉଁ କେଉଁ ବର୍ଣ୍ଣ ମିଶିଛି ?

Ans 1. ନ + ଜ

2. କ୍ + ନ

3. କ୍ + ଜ

4. ଜ୍ + କ

Question ID :473941437

Status : **Answered**

Chosen Option :4

Q.1
3 କାହାକୁ ପୁଷ୍ପମାସ କାହାର ସର୍ବନାଶ? ଏହା କେଉଁ ଅର୍ଥରେ ପ୍ରକାଶ କରେ ?

Ans 1. ପୁଷ୍ପ ମାସରେ ଶିତ ବଢ଼େ

2.

ଜଣକର ଲାଭ ବେଳେ ଅନ୍ୟ ଜଣକର କ୍ଷତି

3. ଏକା ମାସରେ ଶିତ ଯାଏନି

4. ଶିତ ଯୋଗୁଁ ସର୍ବନାଶ ହୁଏ

Question ID :473941439

Status : **Answered**

Chosen Option :2

Q.1
4 ଖେଳ + ଆଳି = ଖେଳାଳି 'ଆଳି' ପ୍ରତ୍ୟେକ କେଉଁ ଅର୍ଥରେ ହେଉଛି ?

Ans 1. ସମ୍ବନ୍ଧ ଅର୍ଥରେ

2. ଅଭ୍ୟାସ ଅର୍ଥରେ

3. ବୃତ୍ତି ଅର୍ଥରେ

4. କ୍ଷୁଦ୍ର ଅର୍ଥରେ

Question ID :473941432

Status : **Answered**

Chosen Option :3

Q.1
5 ସେ ଭାତ ଖାଇବାକୁ ଯାଉଛି। ଏଠାରେ ଖାଇବାକୁ କି ପ୍ରକାର ପଦ ?

Ans 1. ଶବ୍ଦକ କ୍ରିୟା

2. ସମାପିକା କ୍ରିୟା

3. କ୍ରିୟା ବାଚକ ବିଶେଷ୍ୟ

4. ଅସମାପିକା କ୍ରିୟା

Question ID :473941425

Status : **Answered**

Chosen Option :3

Q.1
6 ରାମାୟଣ ଗଦ୍ୟଟି ଶିକ୍ଷାଦାନ ଦେବାର ଭାବେଣ୍ୟ କଣ ?

Ans 1.

ମଧୁସୂଦନଙ୍କ ଗଦ୍ୟଶୈଳୀ ସହିତ ପିଲାଙ୍କୁ ପରିଚିତ କରାଇବା

2. ରାମଚନ୍ଦ୍ରର ଶାସନର ଦୋଷ ଦେଖିବା

3. ରାମ ରାଜ୍ୟ ସମ୍ପର୍କରେ ଆରଣ୍ୟ ଦେବା

4. ରାମାୟଣ ବିଷୟରେ ପିଲାଙ୍କୁ ଜଣାଇବା

Question ID :473941436

Status : **Answered**

Chosen Option :4

Q.1
7 ପ୍ରତ୍ୟେକ ଯୋଗରେ ଦୁଇଟି ବର୍ଷ ମଧ୍ୟରେ ଅନ୍ୟତକ ବର୍ଷ ଆସିଲେ କଣ କହନ୍ତି?

Question ID : 473941426

Status : Answered

Chosen Option : 3

- Ans
- 1. ଲୋପ
 - 2. ଗୁଣ
 - 3. ଆଗମ
 - 4. ଆଦେଶ

Q.1
8 'ଛ' ମାଣ ଆଠଗୁଣ୍ଠ ସହାର ଲେଖକ କିଏ?

Question ID : 473941424

Status : Answered

Chosen Option : 3

- Ans
- 1. ଗଙ୍ଗାଧର
 - 2. ଗୋଦାବରିଣୀ
 - 3. ଫକିରମୋହନ
 - 4. ସୁରେନ୍ଦ୍ର ମହାନ୍ତି

Q.1
9 ପ୍ରଣୟ ବଳରୀର ବିଷୟବସ୍ତୁ କେଉଁ ସଂସ୍କୃତ କାବ୍ୟରୁ ଆଧାରିତ?

Question ID : 473941440

Status : Answered

Chosen Option : 2

- Ans
- 1. ରଘୁବଂଶ
 - 2. ମେଘଦୂତ
 - 3. କୁମାର ସମ୍ଭବମ୍
 - 4. ଅଭିଜ୍ଞାନ ଶକୁନ୍ତଳମ୍

Q.2
0 କେଉଁ କାବ୍ୟଟି ରାଧାନାଥକ ରଚନା ନୁହେଁ?

Question ID : 473941441

Status : Answered

Chosen Option : 1

- Ans
- 1. ପ୍ରଣୟବଳରୀ
 - 2. କେଦାର ଶୈରୀ
 - 3. ଚନ୍ଦ୍ରଭାଗା
 - 4. ଚିଲିକା

Section : Current Affairs

Q.1 Who was the Governor General of India during the First War of Independence (1857)?

Question ID : 473941444

Status : Answered

Chosen Option : 2

- Ans
- 1. Lord Curzon
 - 2. Lord Canning
 - 3. Lord Dalhousie
 - 4. Lord Mountbatten

Q.2

Ans 1. Enhanced production of oil seeds

Question ID : 473941460

Status : Answered

Chosen Option : 4

2.

Enhanced production of fertilizers

3.

Enhanced production of fishes

4. Enhanced production of milk

Q.3 With which bank was ING Vysya bank merged into, in the year 2014?

- Ans 1. Yes Bank
 2. HDFC Bank
 3. Kotak Mahindra Bank
 4. Axis Bank

Question ID : 473941466

Status : Marked For Review

Chosen Option : 3

Q.4 Which place in India produces world's highest average rainfall?

- Ans 1. Kohima
 2. Shillong
 3. Imphal
 4. Mawsynram

Question ID : 473941458

Status : Answered

Chosen Option : 4

Q.5 By which Amendment Act of Indian constitution was the eleventh fundamental duty added?

- Ans 1. 56th Amendment act
 2. 86th Amendment act
 3. 66th Amendment act
 4. 55th Amendment act

Question ID : 473941449

Status : Answered

Chosen Option : 2

Q.6 Which Governor General of India abolished titles and pensions?

- Ans 1. Lord Canning
 2. Lord Lytton
 3. Lord Curzon
 4. Lord Dalhousie

Question ID : 473941448

Status : Marked For Review

Chosen Option : 3

Q.7 Which one of the following is no more a fundamental right in the Indian Constitution?

- Ans 1. Right to freedom of religion
 2. Right against exploitation
 3. Right to private property
 4. Right to equality

Question ID : 473941452

Status : Answered

Chosen Option : 3

Q.8 In which year, the first amendment act of Indian Constitution passed?

- Ans 1. 1959
 2. 1949
 3. 1951
 4. 1956

Question ID : 473941451

Status : Marked For Review

Chosen Option : 3

Q.9 Who is the present Union Finance Minister of India?

- Ans 1. Uma Bharti

Question ID : 473941470

Status : Answered

Chosen Option : 2

- 2. Arun Jaitley
- 3. Sushma Swaraj
- 4. Nitin Gadkari

Q.1
0 Who is the Chief selector in the Board of Control for Cricket in India (BCCI) as in January 2017?

- Ans
- 1. Sunil Gavaskar
 - 2. M.S.K. Prasad
 - 3. Anil Kumble
 - 4. Ravi Shastri

Question ID : 473941465
Status : **Marked For Review**
Chosen Option : 2

Q.1
1 Which former Prime Minister of India served as the Governor of Reserve Bank of India?

- Ans
- 1. I.K. Gujral
 - 2. V.P. Singh
 - 3. Deve Gowda
 - 4. Manmohan Singh

Question ID : 473941459
Status : **Marked For Review**
Chosen Option : 2

Q.1
2 What is the administrative capital of Dadra and Nagar Haveli?

- Ans
- 1. Port Blair
 - 2. Mumbai
 - 3. Porvorim
 - 4. Silvassa

Question ID : 473941454
Status : **Answered**
Chosen Option : 4

Q.1
3 Who is the present Chief Minister of Delhi?

- Ans
- 1. Arvind Kejriwal
 - 2. Sushma Swaraj
 - 3. Sheila Dixit
 - 4. Madan Lal Khurana

Question ID : 473941468
Status : **Answered**
Chosen Option : 1

Q.1
4 Where is Hirakud Multipurpose project located in India?

- Ans
- 1. Maharashtra
 - 2. Odisha
 - 3. Karnataka
 - 4. Madhya Pradesh

Question ID : 473941457
Status : **Answered**
Chosen Option : 2

Q.1
5 Which article of Indian Constitution makes Right to Education for children up to age of 14, a Fundamental Right?

- Ans
- 1. Article 31A
 - 2. Article 51 A
 - 3. Article 41 A

Question ID : 473941453
Status : **Answered**
Chosen Option : 4

✓ 4. Article 21A

Q.1
6 Where is India's largest port located?

- Ans
- ✗ 1. Visakhapatnam
 - ✗ 2. Kandla
 - ✗ 3. Kolkata
 - ✓ 4. Navi Mumbai

Question ID : 473941455
Status : Answered
Chosen Option : 1

Q.1
7 Who won the finals of Women's singles badminton at Rio Olympics 2016?

- Ans
- ✗ 1. Wang Yihan
 - ✗ 2. P.V. Sindhu
 - ✓ 3. Carolina Marin
 - ✗ 4. Nozomi Okuhara

Question ID : 473941467
Status : Answered
Chosen Option : 2

Q.1
8 Whom did Babur defeat in the First Battle of Panipat?

- Ans
- ✗ 1. Tipu Sultan
 - ✗ 2. Sher Shah
 - ✓ 3. Ibrahim Lodhi
 - ✗ 4. Hasan Khan

Question ID : 473941446
Status : Answered
Chosen Option : 3

Q.1
9 Which ruler of Gupta dynasty is known as 'Indian Napoleon'?

- Ans
- ✗ 1. Sri Gupta
 - ✓ 2. Samudragupta
 - ✗ 3. Harshavardhana
 - ✗ 4. Ashoka

Question ID : 473941447
Status : Answered
Chosen Option : 2

Q.2
0 Which country's president was the chief guest for 2016 republic day celebrations of India?

- Ans
- ✗ 1. South Africa
 - ✓ 2. France
 - ✗ 3. Srilanka
 - ✗ 4. Kenya

Question ID : 473941471
Status : Answered
Chosen Option : 2

Q.2
1 Who played the role of Mohammad Azharuddin in the movie titled "Azhar"?

- Ans
- ✓ 1. Emraan Hashmi
 - ✗ 2. Siddharth Roy Kapoor
 - ✗ 3. Nawazuddin Siddiqui
 - ✗ 4. Sushant Rajput

Question ID : 473941469
Status : Answered
Chosen Option : 3

Q.2 Which country hosted the Men's Hockey World Cup 2014?

2 Ans	<input checked="" type="checkbox"/> 1. England <input checked="" type="checkbox"/> 2. South Africa <input checked="" type="checkbox"/> 3. Netherlands <input checked="" type="checkbox"/> 4. South Korea	Question ID : 473941472 Status : Answered Chosen Option : 2
Q.2 3	Who founded the famous city of Fatehpur Sikri?	Question ID : 473941445 Status : Answered Chosen Option : 2
Ans	<input checked="" type="checkbox"/> 1. Alauddin Khilji <input checked="" type="checkbox"/> 2. Akbar <input checked="" type="checkbox"/> 3. Babur <input checked="" type="checkbox"/> 4. Bairam Khan	
Q.2 4	How many medals did India win at the Rio Olympics 2016?	Question ID : 473941464 Status : Answered Chosen Option : 4
Ans	<input checked="" type="checkbox"/> 1. 4 <input checked="" type="checkbox"/> 2. 3 <input checked="" type="checkbox"/> 3. 1 <input checked="" type="checkbox"/> 4. 2	
Q.2 5	During which Five Year Plan, Green Revolution was started in India?	Question ID : 473941461 Status : Answered Chosen Option : 3
Ans	<input checked="" type="checkbox"/> 1. 6 th Five Year Plan <input checked="" type="checkbox"/> 2. 5 th Five Year Plan <input checked="" type="checkbox"/> 3. 3 rd Five Year Plan <input checked="" type="checkbox"/> 4. 4 th Five Year Plan	
Q.2 6	What is the total number of articles as originally adopted in the Indian Constitution?	Question ID : 473941450 Status : Answered Chosen Option : 1
Ans	<input checked="" type="checkbox"/> 1. 295 <input checked="" type="checkbox"/> 2. 595 <input checked="" type="checkbox"/> 3. 495 <input checked="" type="checkbox"/> 4. 395	
Q.2 7	Who was the first Union Finance minister of Independent India?	Question ID : 473941462 Status : Marked For Review Chosen Option : 1
Ans	<input checked="" type="checkbox"/> 1. R. K. Shanmukham Chetty <input checked="" type="checkbox"/> 2. John Mathai <input checked="" type="checkbox"/> 3. C. D. Deshmukh <input checked="" type="checkbox"/> 4. Krishnamachari	
Q.2 8	NITI Aayog replaced which one of the following in 2015?	Question ID : 473941463 Status : Answered Chosen Option : 2
Ans	<input checked="" type="checkbox"/> 1. NABARD	

2. Planning Commission

3. EXIM Bank

4. Election Commission

Q.2 Where is Netaji Subhas Chandra Bose International Airport located in India?
9

Ans 1. Kolkata

2. Goa

3. Patna

4. Mumbai

Question ID : 473941456

Status : Answered

Chosen Option : 1

Q.3 What is the new capital of the state of Andhra Pradesh?
0

Ans 1. Ongole

2. Amaravati

3. Tirupati

4. Visakhapatnam

Question ID : 473941473

Status : Answered

Chosen Option : 2

Section : Reasoning

Q.1 Following question is based on the letters/numbers/symbols arrangement.

A B 6 # 7 H U % 3 \$ F V R 2 1 @ * 4 1 Q E ! 9 L 5

What should come in place of ? in the following series based on the above arrangement?

B#H %\$V 2@4 ?

Ans 1. QE!

2. 9L5

3. Q!L

4. 1E!

Question ID : 473941477

Status : Answered

Chosen Option : 3

Q.2 Read the following information carefully and answer the question given below.

- P Q R S T U V W are sitting in a row facing SOUTH.
- P is fourth to the right of T.
- W is fourth to the left of S.
- R and U, who are not at the ends, are neighbors of Q and T respectively.
- W is next to the left of P and P is the neighbor of Q.

What is the position of P?

Ans 1. Third to the right of U

2. Fourth to the left of S

3. Third to the right of W

4. Second to the right of T

Question ID : 473941503

Status : Answered

Chosen Option : 1

Q.3 In a certain code HYDERABAD is written as IZCDSBAZE, how can COMPUTERS be written in that code language?

Ans 1. DPNQVUDSR

2. DPNQSRDVU

3. DPLDQTVU

Question ID : 473941482

Status : Answered

Chosen Option : 4

✓ 4. DPLOVUDQT

Q.4 In these questions a group of digits is given followed by four combinations of letters and symbols numbered 1), 2), 3), 4). Digits are to be coded as per the scheme and conditions given below. You have to find out which of the four combinations correctly represents the group of digits. Serial number of that combination is your answer.

Digit	5	1	2	8	6	3	9	0	4	7
Letter/symbol	H	S	T	A	U	%	#	F	R	@

Conditions:

- i) If first digit is odd and the last digit is even their codes are to be interchanged.
- ii) If the first as well as the last digit is even both are to be coded as #.
- iii) If the first digit is even and the last digit is odd both are to be coded as the code for the last digit.
- iv) If first digit as well as the last digit is odd, nothing to be changed.

590247

- Ans
- ✗ 1. @#FTR@
 - ✓ 2. H#FTR@
 - ✗ 3. H#FTRH
 - ✗ 4. @#FTRH

Question ID : 473941486
Status : Answered
Chosen Option : 2

Q.5 Find out the relationship between the first two words and choose the missing word from the given alternatives which bears the same relationship as the first two bear.

Amitabh Bachchan : Films :: Rajdeep Sardesai : ?

- Ans
- ✗ 1. Cricket
 - ✓ 2. Media
 - ✗ 3. Business
 - ✗ 4. Dance

Question ID : 473941479
Status : Answered
Chosen Option : 3

Q.6 What is the angle traced by hour hand in 25 minutes?

- Ans
- ✗ 1. 12°
 - ✗ 2. 25°
 - ✗ 3. 10.5°
 - ✓ 4. 12.5°

Question ID : 473941496
Status : Not Attempted and Marked For Review
Chosen Option :--

Q.7 Read the following information carefully and answer the question given below.

- i) P Q R S T U V W are sitting in a row facing SOUTH.
- ii) P is fourth to the right of T.
- iii) W is fourth to the left of S.
- iv) R and U, who are not at the ends, are neighbors of Q and T respectively.
- v) W is next to the left of P and P is the neighbor of Q.

What is the position of U?

- Ans
- ✓ 1. Next to the right of T
 - ✗ 2. Second to the right of P
 - ✗ 3. Third to the right of W
 - ✗ 4. Next to the right of V

Question ID : 473941499
Status : Answered
Chosen Option : 1

Q.8 Find the missing number from the given alternatives.

1	4	7
2	5	8
7	6	1
2	183	?

- Ans
- ✗ 1. 366
 - ✓ 2. 854

Question ID : 473941492
Status : Marked For Review
Chosen Option : 4

3. 12
 4. 754

Q.9 Pointing to a man in the photograph, Rashmi said, "The only son of his grandfather is my husband". How is Rashmi related to that man?

- Ans 1. Sister
 2. Aunt
 3. Grand daughter
 4. Mother

Question ID : 473941495

Status : Marked For Review

Chosen Option : 4

Q.1 Following question is based on the letters/numbers/symbols arrangement.

0 A S B 6 # 7 H U % 3 S F V R 2 1 @ * 4 1 Q E ! 9 L 5
 How many such symbols are there in the above arrangement, each of which is immediately preceded by a vowel and also immediately followed by a number?

- Ans 1. Three
 2. Two
 3. One
 4. None

Question ID : 473941476

Status : Answered

Chosen Option : 2

Q.1 What comes in place of question mark (?) in the following number series?
 1 5, 51, 511, 5111, ?

- Ans 1. 53333
 2. 52222
 3. 51111
 4. 50000

Question ID : 473941489

Status : Answered

Chosen Option : 3

Q.1 If 6th may, 2014 is Tuesday, what day of the week was on 2nd June, 2014?
 2

- Ans 1. Wednesday
 2. Sunday
 3. Tuesday
 4. Monday

Question ID : 473941497

Status : Answered

Chosen Option : 1

Q.1 Find the odd one from the given options which is different from others.
 3

- Ans 1. ABEFG
 2. DEFGH
 3. MNORU
 4. IJOPR

Question ID : 473941481

Status : Answered

Chosen Option : 2

Q.1 Find the letter in place of question mark (?) in the series given below.
 4 A, E, I, M, Q, ?

- Ans 1. T
 2. V
 3. W
 4. U

Question ID : 473941490

Status : Answered

Chosen Option : 4

Q.1

Question ID : 473941500

5 Read the following information carefully and answer the question given below.

- P Q R S T U V W are sitting in a row facing SOUTH.
- P is fourth to the right of T.
- W is fourth to the left of S.
- R and U, who are not at the ends, are neighbors of Q and T respectively.
- W is next to the left of P and P is the neighbor of Q.

Which of the following statements is not true?

- Ans 1. S is next to the left of R
 2. T is at left End
 3. Q is next to the Right of P
 4. V is the neighbor of U and W

Status : Answered

Chosen Option : 1

Q.1 If in a certain code language JUG is written as 38, then how will GST be written in that language?

- 6
 Ans 1. 64
 2. 25
 3. 46
 4. 40

Question ID : 473941483

Status : Answered

Chosen Option : 3

Q.1 At cinema hall, on a ticket counter there are 15 persons in a queue. If every second person in the queue is a male and also at the starting and at the end there is a male, then the total number of females in the queue is:
 NOTE: No two men are together

- 7
 Ans 1. 7
 2. 9
 3. 6
 4. 8

Question ID : 473941493

Status : Answered

Chosen Option : 1

Q.1 Following question is based on the letters/numbers/symbols arrangement.

A 8 B 6 # 7 H U % 3 S F V R 2 1 @ * 4 1 Q E ! 9 L 5
 If all the symbols are dropped from the above arrangement which of the following will be eighth from the left end?

- 8
 Ans 1. V
 2. 3
 3. F
 4. U

Question ID : 473941475

Status : Answered

Chosen Option : 2

Q.1 If '*' means '-', '-' means '+', '+' means '*', '*' means 'x', then find the value of:
 $(15 \times 9 + 6 - 7) + 4 \div 14$

- 9
 Ans 1. 60
 2. 28
 3. 30
 4. 58

Question ID : 473941494

Status : Marked For Review

Chosen Option : 4

Q.2 Following question is based on the letters/numbers/symbols arrangement.

0 A 8 B 6 # 7 H U % 3 S F V R 2 1 @ * 4 1 Q E ! 9 L 5

Which of the following is seventh to the right of fifteenth from the right end?

- Ans 1. 1
 2. *
 3. 4
 4. Q

Question ID : 473941474

Status : Answered

Chosen Option : 3

Q.2 Kumar started walking towards East. He turned left and again taken left. Finally, he once again turned left. Find the direction in which he is walking now?

- Ans**
- 1. South
 - 2. West
 - 3. East
 - 4. North

Question ID : 473941498
Status : Answered
Chosen Option : 1

Q.2 In these questions a group of digits is given followed by four combinations of letters and symbols numbered 1), 2), 3), 4). Digits are to be coded as per the scheme and conditions given below. You have to find out which of the four combinations correctly represents the group of digits. Serial number of that combination is your answer.

Digit	5	1	2	8	6	3	9	0	4	7
Letter/symbol	H	S	T	A	U	%	#	F	R	@

- Conditions:
- i) If first digit is odd and the last digit is even their codes are to be interchanged.
 - ii) If the first as well as the last digit is even both are to be coded as #.
 - iii) If the first digit is even and the last digit is odd both are to be coded as the code for the last digit.
 - iv) If first digit as well as the last digit is odd, nothing to be changed.

374862

- Ans**
- 1. *@RAU*
 - 2. %@RAUT
 - 3. T@RAU%
 - 4. %@RAU%

Question ID : 473941488
Status : Answered
Chosen Option : 3

Q.2 In these questions a group of digits is given followed by four combinations of letters and symbols numbered 1), 2), 3), 4). Digits are to be coded as per the scheme and conditions given below. You have to find out which of the four combinations correctly represents the group of digits. Serial number of that combination is your answer.

Digit	5	1	2	8	6	3	9	0	4	7
Letter/symbol	H	S	T	A	U	%	#	F	R	@

- Conditions:
- i) If first digit is odd and the last digit is even their codes are to be interchanged.
 - ii) If the first as well as the last digit is even both are to be coded as #.
 - iii) If the first digit is even and the last digit is odd both are to be coded as the code for the last digit.
 - iv) If first digit as well as the last digit is odd, nothing to be changed.

471556

- Ans**
- 1. #@SH%#
 - 2. U@SH%U
 - 3. R@SH%R
 - 4. R@SH%U

Question ID : 473941484
Status : Answered
Chosen Option : 1

Q.2 In these questions a group of digits is given followed by four combinations of letters and symbols numbered 1), 2), 3), 4). Digits are to be coded as per the scheme and conditions given below. You have to find out which of the four combinations correctly represents the group of digits. Serial number of that combination is your answer.

Digit	5	1	2	8	6	3	9	0	4	7
Letter/symbol	H	S	T	A	U	%	#	F	R	@

- Conditions:
- i) If first digit is odd and the last digit is even their codes are to be interchanged.
 - ii) If the first as well as the last digit is even both are to be coded as #.
 - iii) If the first digit is even and the last digit is odd both are to be coded as the code for the last digit.
 - iv) If first digit as well as the last digit is odd, nothing to be changed.

348096

- Ans**
- 1. URAF#%
 - 2. %@RAU%
 - 3. URAF#U
 - 4. %RAF#U

Question ID : 473941487
Status : Answered
Chosen Option : 1

Q.2 In the following question, arrange the given words in meaningful sequence and choose the correct sequence from the given alternatives.

1. Telangana 2. Universe 3. India 4. World 5. Charninar

- Ans**
- 1. 5, 3, 1, 2, 4
 - 2. 2,4,5,1,3
 - 3. 2, 4, 3, 5, 1

Question ID : 473941491
Status : Answered
Chosen Option : 4

✓ 4. 5, 1, 3, 4, 2

Q.2 Read the following information carefully and answer the question given below.

6

- i) P Q R S T U V W are sitting in a row facing SOUTH.
- ii) P is fourth to the right of T.
- iii) W is fourth to the left of S.
- iv) R and U, who are not at the ends, are neighbors of Q and T Respectively.
- v) W is next to the left of P and P is the neighbor of Q.

Who are sitting at the ends?

- Ans
- ✓ 1. T and S
 - ✗ 2. U and R
 - ✗ 3. V and Q
 - ✗ 4. U and S

Question ID : 473941502

Status : Answered

Chosen Option : 1

Q.2 Find out the relationship between the first two words and choose the missing word from the given alternatives which bears the same relationship as the first two bear.

7

Substitute : Replace :: Death : ?

- Ans
- ✗ 1. Abundance
 - ✓ 2. Scarcity
 - ✗ 3. Rumour
 - ✗ 4. Destroy

Question ID : 473941478

Status : Answered

Chosen Option : 2

Q.2 Read the following information carefully and answer the question given below.

8

- i) P Q R S T U V W are sitting in a row facing SOUTH.
- ii) P is fourth to the right of T.
- iii) W is fourth to the left of S.
- iv) R and U, who are not at the ends, are neighbors of Q and T Respectively.
- v) W is next to the left of P and P is the neighbor of Q.

Who is the neighbor /s of S?

- Ans
- ✗ 1. Q and R are the neighbors of S
 - ✓ 2. R alone is the neighbor of S
 - ✗ 3. W alone is the neighbor of S
 - ✗ 4. V alone is the neighbor of S

Question ID : 473941501

Status : Answered

Chosen Option : 2

Q.2 In these questions a group of digits is given followed by four combinations of letters and symbols numbered 1), 2), 3), 4). Digits are to be coded as per the scheme and conditions given below. You have to find out which of the four combinations correctly represents the group of digits. Serial number of that combination is your answer.

9

Digit	5	1	2	8	6	3	9	0	4	7
Letter/symbol	H	S	T	A	U	%	#	F	R	@

Conditions:

- i) If first digit is odd and the last digit is even their codes are to be interchanged.
- ii) If the first as well as the last digit is even both are to be coded as #.
- iii) If the first digit is even and the last digit is odd both are to be coded as the code for the last digit.
- iv) If first digit as well as the last digit is odd, nothing to be changed.

697845

- Ans
- ✓ 1. H#@ARH
 - ✗ 2. U#@ARH
 - ✗ 3. H#@ARU
 - ✗ 4. U#@ARU

Question ID : 473941485

Status : Answered

Chosen Option : 1

Q.3 Find the odd one from the given options which is different from others.

0

- Ans
- ✗ 1. 290

Question ID : 473941480

Status : Marked For Review

Chosen Option : 4

2. 470
 3. 450
 4. 380

Section : Subject Content & Methodology

Q.1 According to Greatest Integer Function, $[-2.3] = \underline{\hspace{2cm}}$.

- Ans 1. -2
 2. 3
 3. -3
 4. 2.3

Question ID : 473941523
 Status : Answered
 Chosen Option : 1

Q.2 The point (6, 0) divides the line joining (5, -2) and (9, 6) in the ratio:

- Ans 1. 3 : 2
 2. 2 : 3
 3. 1 : 2
 4. 1 : 3

Question ID : 473941564
 Status : Answered
 Chosen Option : 4

Q.3 Two cards are drawn from a pack of cards one after the other. Find the probability that the first card is king and the second card is queen, if the first card is not replaced.

- Ans 1. 4/663
 2. 4/51
 3. 1/13
 4. 1/169

Question ID : 473941517
 Status : Answered
 Chosen Option : 1

Q.4 Which of the following is NOT a remedy for dealing with misconceptions about "equal sign" in word problems?

- Ans 1. Highlighting and elaborating the logical connection while writing the case study
 2. Reading it aloud to highlight the case of the two being "equal"
 3. Modeling the correct use of equal sign while writing on the board
 4. Replacing the word "equal to" with synonyms such as "is the same as"

Question ID : 473941589
 Status : Answered
 Chosen Option : 4

Q.5 The point on the x-axis which is equidistant from (2, -5) and (-2, 9) is:

- Ans 1. (7, 0)
 2. (9, 0)
 3. (2, 0)
 4. (0, 2)

Question ID : 473941561
 Status : Marked For Review
 Chosen Option : 2

Q.6 Which of the following is the relation between arithmetic mean, geometric mean and harmonic mean?

- Ans 1. $AM^2 = GM \times HM$
 2. $GM = AM \times HM$
 3. $HM^2 = AM \times GM$

Question ID : 473941550
 Status : Answered
 Chosen Option : 1

✓ 4. $GM^2 = AM \times HM$

Q.7 According to lehmus steiner theorem which of the following is true?

- Ans ✗ 1. Every triangle with two angle bisectors of equal lengths is equilateral
- ✓ 2. Every triangle with two angle bisectors of equal lengths is isosceles
- ✗ 3. Every triangle with two angle bisectors of equal lengths is acute angled
- ✗ 4. Every triangle with two angle bisectors of equal lengths is right angled

Question ID : 473941560
Status : Answered
Chosen Option : 2

Q.8 End of the term examination is called:

- Ans ✗ 1. Formative assessment
- ✓ 2. Summative assessment
- ✗ 3. Ongoing assessment
- ✗ 4. Board examination

Question ID : 473941599
Status : Answered
Chosen Option : 2

Q.9 Which of the following statements is true about problem solving?

- Ans ✗ 1. Problem solving emphasizes more on understanding the situation
- ✗ 2. Problem solving requires only application of skills and knowledge
- ✓ 3. Problem solving requires us to combine skills and concepts in order to deal with specific mathematical situations
- ✗ 4. Problem solving does not emphasize on basic skills or understanding of the problem

Question ID : 473941586
Status : Answered
Chosen Option : 1

Q.10 a, b, c are three sides of a triangle then which of the following is true?

- Ans ✗ 1. $a + b \leq c$
- ✓ 2. $a + b > c$
- ✗ 3. $a + b \geq c$
- ✗ 4. $a + b = c$

Question ID : 473941574
Status : Answered
Chosen Option : 2

Q.11 The sum of divisors of the number 432 is:

- Ans ✗ 1. 72
- ✓ 2. 1240
- ✗ 3. 195
- ✗ 4. 121

Question ID : 473941507
Status : Answered
Chosen Option : 2

Q.12 Identify the roots of the equation $x^2 - 4x + 6 = 0$.

- Ans ✗ 1. $-2 \pm i\sqrt{2}$
- ✗ 2. ± 2
- ✓ 3. $2 \pm i\sqrt{2}$

Question ID : 473941519
Status : Answered
Chosen Option : 3

4. $2 \pm \sqrt{2}$

Q.1
3 If A and B are two finest sets, then $A \cup (B \cap C) = ?$

Question ID : 473941554

Status : Answered

Chosen Option : 2

Ans 1. $(A \cap B) \cap C$

2. $(A \cup B) \cap (A \cup C)$

3. $(A \cap B) \cup (A \cap C)$

4. $(A \cup B) \cap C$

Q.1
4 The instructional model proposed by "The Biological Science Curriculum Study (BSCS), a team led by Principal Investigator Roger Bybee", for constructivism is:

Question ID : 473941588

Status : Answered

Chosen Option : 1

Ans 1. The ICON approach

2. PPP approach

3. Multiple Intelligence approach

4. 5Es approach

Q.1
5 The most important stage in problem solving:

Question ID : 473941602

Status : Answered

Chosen Option : 2

Ans 1. Application of formula

2. Understanding the problem

3. Reading aloud the problem

4. Calculation

Q.1
6 Which of the following lies between -2 and -3 on the number line?

Question ID : 473941505

Status : Answered

Chosen Option : 3

Ans 1. -4.5

2. $-11/3$

3. $-\sqrt{6}$

4. $-\sqrt{3}$

Q.1
7 $\frac{(6x-7)}{4} + \frac{(3x-5)}{7} = \frac{(5x+78)}{28}$, find the value of x ?

Question ID : 473941539

Status : Answered

Chosen Option : 3

Ans 1. 6

2. 5

3. 3

4. 4

Q.1
8 Frustum of cone can be determined using:

Question ID : 473941568

Status : Answered

Chosen Option : 2

Ans 1. $V = \frac{\pi h}{3} (R^2 + rR - r^2)$

2. $V = \frac{\pi h}{3} (R^2 + rR + r^2)$

^{3.} $V = \frac{4\pi h}{3}(R^2 + rR + r^2)$

^{4.} $V = \frac{\pi h}{2}(R^2 + rR + r^2)$

Q.1
9 Rationalize the denominator for $-7/(6+\sqrt{2})$:

Question ID : 473941525

Status : Answered

Chosen Option : 4

Ans ^{1.} 49/34

^{2.} $(7\sqrt{2} + 42)/34$

^{3.} $34/(7\sqrt{2} + 42)$

^{4.} $(7\sqrt{2} - 42)/34$

Q.2
0 If two lines are parallel then how many solutions are there?

Question ID : 473941535

Status : Answered

Chosen Option : 3

Ans ^{1.} Infinite solutions

^{2.} One solution

^{3.} No solution

^{4.} Finite solutions

Q.2
1 Which of the following is not an advantage of discovery method?

Question ID : 473941584

Status : Answered

Chosen Option : 4

Ans ^{1.}

The student learns a way of going about learning on his own

^{2.}

The student understands what he learns and is thus better able to remember it and to use it in other situations

^{3.}

The student develops an interest in what is he is learning

^{4.}

The student always verbalizes the problem

Q.2
2

Age	Frequency
18	12
19	5
20	3
21	9
22	1
23	8
24	12
25	12
26	5
27	3
Total	71

Question ID : 473941579

Status : Answered

Chosen Option : 4

For the given data set what is the mode?

Ans ^{1.} 20, 27 are modes

^{2.} 19, 26 are modes

3. No mode
 4. 18, 24, 25 are modes

Q.2
3 Who can participate in mathematics club activities?

- Ans 1. All classes from 1 to 10
 2. Only from classes 3 to 5
 3. Only from classes 4 to 10
 4. Only from classes 4 to 8

Question ID : 473941591
Status : Answered
Chosen Option : 3

Q.2
4 (5, - 2), (6, 4) and (7, - 2) are the vertices of:

- Ans 1. Equilateral triangle
 2. Right angled triangle
 3. Isosceles triangle
 4. Scalene triangle

Question ID : 473941557
Status : Answered
Chosen Option : 3

Q.2
5 According to Cauchy-Schwarz, if $x^2 + y^2 + z^2 = 1$, then what is the maximum value of $x + 2y + 3z = 0$?

- Ans 1. $\sqrt{14}$
 2. $\sqrt{10}$
 3. $\sqrt{25}$
 4. $\sqrt{20}$

Question ID : 473941552
Status : Marked For Review
Chosen Option : 1

Q.2
6 The sides of a right angled triangle are in ratio 3 : 4 : 5 and 'θ' is adjacent to the smallest side then find the ratio of $\sin \theta : \cos \theta : \tan \theta$.

- Ans 1. 4 : 3 : 5
 2. 3 : 4 : 5
 3. 1 : 2 : 3
 4. 12 : 9 : 20

Question ID : 473941570
Status : Answered
Chosen Option : 4

Q.2
7 Area of the triangle formed by the points (0, 0), (3, 0) and (0, 4) is:

- Ans 1. 6 sq. units
 2. 2 sq. units
 3. 3 sq. units
 4. 4 sq. units

Question ID : 473941565
Status : Answered
Chosen Option : 1

Q.2
8 In an arithmetic progression the first term is 34 and the last term is 124. If there are 31 numbers in the progression then the common difference is:

- Ans 1. 8
 2. 12
 3. 3

Question ID : 473941547
Status : Answered
Chosen Option : 3

~~X~~ 4. 19

Q.2
9 The distance between points (3, 4) and (-1, 4) is:

- Ans ~~X~~ 1. 3
 2. 4
~~X~~ 3. 6
~~X~~ 4. 10

Question ID : 473941563
 Status : Answered
 Chosen Option : 2

Q.3
0 $\frac{(\tan 64^\circ \times \sin 72^\circ)}{(\cos 18^\circ \times \cot 26^\circ)}$

- Ans ~~X~~ 1. 2
~~X~~ 2. $\tan^2 64^\circ$
 3. 1
~~X~~ 4. $\sin^2 72^\circ$

Question ID : 473941526
 Status : Answered
 Chosen Option : 3

Q.3
1 One real root of the equation $x^3 + x - 5 = 0$ lies in the interval.

- Ans ~~X~~ 1. (-3, -2)
~~X~~ 2. (2, 3)
 3. (1, 2)
~~X~~ 4. (3, 4)


Question ID : 473941512
 Status : Marked For Review
 Chosen Option : 2

Q.3
2 The degree of the polynomial obtained by the product $(x^2 + 4x + 3)(2x^2 - 9x + 7)$ is:

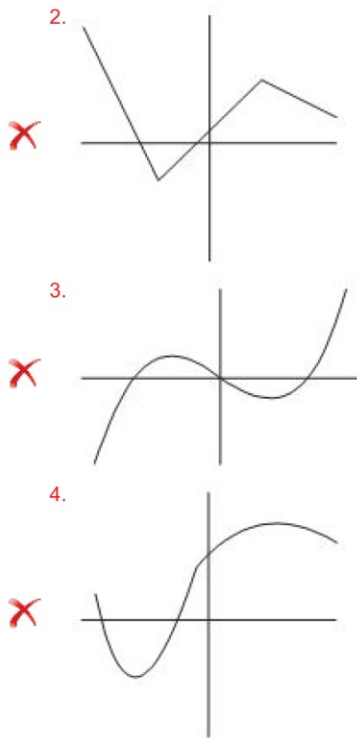
- Ans 1. 4
~~X~~ 2. 3
~~X~~ 3. 1
~~X~~ 4. 2

Question ID : 473941534
 Status : Answered
 Chosen Option : 1

Q.3
3 Which of the following graphs does not represent a function?

- Ans 1. 

Question ID : 473941513
 Status : Answered
 Chosen Option : 1



Q.3 Two lines with slopes m_1 and m_2 are perpendicular then, which of the following is true?
4

- Ans
- 1. $m_1 \times m_2 = -1$
 - 2. $m_1 \times m_2 = 0$
 - 3. $\frac{m_1}{m_2} = -1$
 - 4. $m_1 = m_2$

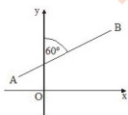
Question ID : 473941538
Status : Answered
Chosen Option : 1

Q.3 If λ is an eigen value of a matrix A then the eigen value of A^{-1} is:
5

- Ans
- 1. $1/\lambda$
 - 2. λ
 - 3. $-\lambda$
 - 4. λ^2

Question ID : 473941521
Status : Answered
Chosen Option : 2

Q.3
6



A line makes an angle 60° with the y-axis as shown in the figure, which of the following is false?

- Ans
- 1. The slope of the line is negative
 - 2. The line makes an angle 30° with the x-axis
 - 3.

Question ID : 473941537
Status : Answered
Chosen Option : 1

The line passes through both x-axis and y-axis

4.

The slope of the line is positive

Q.3
7 The sum of the eigen values of a matrix is the sum of:

Ans 1. Elements in the first row

2.

Elements in the principle diagonal

3. All the elements of the matrix

4. Elements in the last column

Question ID : 473941508

Status : Answered

Chosen Option : 2

Q.3
8 A teacher needs to conduct quiz:

Ans 1. Only after teaching the topics

2. Only before the lesson begins

3. During the lesson

4. Depending on the situation

Question ID : 473941590

Status : Answered

Chosen Option : 1

Q.3
9 $\int_0^1 \frac{1}{1+x} dx = ?$

Ans 1. $\log 2$

2. 1

3. $\log 3$

4. $\frac{1}{2} \log 2$

Question ID : 473941558

Status : Answered

Chosen Option : 1

Q.4
0 Students do this in a mathematics laboratory:

Ans 1. Perform experiments

2. Conduct quiz

3. Make notes from the board

4.

Learn and explore mathematical concepts

Question ID : 473941593

Status : Answered

Chosen Option : 4

Q.4
1 One of the following is NOT a strategy for involving all the students in the learning process.

Ans 1. Ask them to read the text

2. Ask them to talk to each other

3.

Ask them to bring the learning material for experiment

4.

Ask them to listen to the teacher

Question ID : 473941601

Status : Answered

Chosen Option : 3

Q.4 We use intervals to represent data in which of the following?
2

- Ans
- 1. Ungrouped data
 - 2. Grouped data
 - 3. Histograms
 - 4. Raw data

Question ID : 473941578

Status : Answered

Chosen Option : 2

Q.4 If $a_n = c_n a_{n-1}$ and $a_2 = 1$, where c is constant. The value of a_0 is:
3

- Ans
- 1. $\frac{c_1}{c_2}$
 - 2. $\frac{1}{c_1 c_2}$
 - 3. $\frac{c_2}{c_1}$
 - 4. 0

Question ID : 473941575

Status : Answered

Chosen Option : 4

Q.4 10 students of class x took part in mathematics quiz. If number of girls who took part in quiz is 4 more than the number of boys, how many girls and boys took part in the quiz?
4

- Ans
- 1. 6 boys, 4 girls
 - 2. 7 girls, 3 boys
 - 3. 7 boys, 3 girls
 - 4. 6 girls, 4 boys

Question ID : 473941540

Status : Answered

Chosen Option : 2

Q.4 Derivative of $\tan(2x + 3)$ is:
5

- Ans
- 1. $2\sec^2(2x)$
 - 2. $3\sec^2(2x + 3)$
 - 3. $2\sec^2(3)$
 - 4. $2\sec^2(2x + 3)$

Question ID : 473941555

Status : Answered

Chosen Option : 4

Q.4 Which of the following is false?
6

- Ans
- 1. $\sec^2\theta - \tan^2\theta = 1$
 - 2. $\sin^2\theta + \cos^2\theta = 1$
 - 3. $\sec^2\theta + 1 = \tan^2\theta$
 - 4. $1 + \cot^2\theta = \operatorname{cosec}^2\theta$

Question ID : 473941516

Status : Answered

Chosen Option : 3

Q.4 What is the most important feature of a constructivist classroom?
7

- Ans
- 1. Teacher explains the concept
 - 2. Teacher asks questions
 - 3.

Question ID : 473941592

Status : Answered

Chosen Option : 3

Teacher facilitates conceptual understanding

4. Teacher gives lecture

Q.4
8 If each term of an arithmetic progression is multiplied or divided by the same non-zero constant, the resulting sequence will be in:

- Ans
- 1. Geometric progression
 - 2. All terms become equal
 - 3. Harmonic progression
 - 4. Arithmetic progression

Question ID : 473941549

Status : Answered

Chosen Option : 4

Q.4
9 One of the important tools for ongoing assessment is:

- Ans
- 1. Observing performance
 - 2. Classroom questioning
 - 3. Assessing portfolio
 - 4. Making anecdotes

Question ID : 473941598

Status : Answered

Chosen Option : 3

Q.5
0 $\frac{a^{3n}}{a^{n/2}} = ?$

- Ans
- 1. $n^{5a/2}$
 - 2. $n^{-5a/2}$
 - 3. $a^{5n/2}$
 - 4. $a^{-5n/2}$

Question ID : 473941571

Status : Answered

Chosen Option : 3

Q.5
1 Find the angle between x-axis and the line joining (3, -1) and (4, -2).

- Ans
- 1. 90°
 - 2. 45°
 - 3. 270°
 - 4. 135°

Question ID : 473941536

Status : Answered

Chosen Option : 4

Q.5
2 The zone of proximal development in constructivist theory was proposed by:

- Ans
- 1. Jean Piaget
 - 2. Vygotsky
 - 3. Howard Gardner
 - 4. Benjamin Blooms

Question ID : 473941587

Status : Answered

Chosen Option : 1

Q.5
3 The area of a triangle in which the perpendicular distance from a vertex to its opposite side is 4 cm and the length of that side is 6 cm will be:

- Ans
- 1. 24 cm^2
 - 2. 24 cm

Question ID : 473941515

Status : Answered

Chosen Option : 4

3. 12 cm

4. 12 cm^2

Q.5
4 The lines $x - 2y = 0$ and $3x + 4y = 20$ meet at:

Ans 1. (4, 3)

2. (4, 2)

3. (2, 4)

4. (3, 4)

Question ID : 473941541

Status : Answered

Chosen Option : 2

Q.5
5 While converting 1386 into prime factors, how many prime numbers are used?

Ans 1. 4

2. 1

3. 3

4. 2

Question ID : 473941572

Status : Answered

Chosen Option : 1

Q.5
6 According to Chebyshev's Inequality, which of following is true?

Ans 1. $\Pr(|X-\mu| \geq k\sigma) \leq 1/k^2$

2. $\Pr(|X-\mu| \leq k\sigma) = 1/k^2$

3. $\Pr(|X-\mu| \geq k\sigma) \geq 1/k^2$

4. $\Pr(|X-\mu| \geq k\sigma) = 1/k^2$

Question ID : 473941553

Status : Answered

Chosen Option : 1

Q.5
7 The sum of n terms of an arithmetic progression is 364 and the sum of $(n-1)$ terms is 340 then the n^{th} term of the progression is:

Ans 1. 36

2. 42

3. 40

4. 24

Question ID : 473941548

Status : Answered

Chosen Option : 2

Q.5
8 Which of the following is a rational number?

Ans 1. 2.31515...

2. π

3. $\sqrt{2}$

4. 1.5

Question ID : 473941504

Status : Answered

Chosen Option : 4

Q.5
9 A box contains cards numbered from 1 to 17. If one card is drawn at random from the box, find the probability that it bears a prime number.

Ans 1. $9/17$

2. $2/17$

3. $7/17$

4. $11/17$

Question ID : 473941580

Status : Answered

Chosen Option : 3

Q.6
0 $|A \cap B| + |B - A| = \underline{\hspace{2cm}}$.

- Ans 1. B
 2. AUB
 3. A
 4. \emptyset

Question ID : 473941528
 Status : Answered
 Chosen Option : 1

Q.6
1 Let A & B be two events with $P(A) = 1/2$, $P(B) = 1/3$ and $P(A \cap B) = 1/4$, then $P(A/B) = \underline{\hspace{2cm}}$.

- Ans 1. 4/7
 2. 3/8
 3. 3/4
 4. 7/12

Question ID : 473941514
 Status : Answered
 Chosen Option : 3

Q.6
2 Use of graphing calculator is:

- Ans 1.
 A non-advanced compulsory tool
 2.
 A advanced non-compulsory tool
 3. An advanced compulsory tool
 4.
 A non-advanced non-compulsory tool

Question ID : 473941597
 Status : Answered
 Chosen Option : 2

Q.6
3 If $3x + 2y = 6$, $6x + 4y = 12$ are two linear equations, then which of the following is true?

- Ans 1.
 The pair of equations have infinite solution
 2.
 The pair of equations have only one solution
 3.
 The pair of equations have finite solution
 4.
 The pair of equations have no solution

Question ID : 473941573
 Status : Answered
 Chosen Option : 1

Q.6
4 Area of triangle according to Heron's formula is:

- Ans 1. $\sqrt{s(s+a)(s+b)(s+c)}$
 2. $\sqrt{(s-a)(s-b)(s-c)}$
 3. $\sqrt{s(s-a)(s-b)(s-c)}$
 4. $\sqrt{(s+a)(s+b)(s+c)}$

Question ID : 473941566
 Status : Answered
 Chosen Option : 3

Q.6
5 If $\begin{vmatrix} x & x \\ 1 & x \end{vmatrix} = \begin{vmatrix} 3 & 4 \\ 1 & 2 \end{vmatrix}$ the value of x is.

Question ID : 473941510
 Status : Answered

<p>Ans <input checked="" type="checkbox"/> 1. 1, 2 <input checked="" type="checkbox"/> 2. -1, -2 <input checked="" type="checkbox"/> 3. 1, -2 <input checked="" type="checkbox"/> 4. -1, 2</p>	<p>Chosen Option : 4</p>
<p>Q.6 Find the values of λ so that the equations $x^2 - \lambda x - 21 = 0$ and $x^2 - 3\lambda x + 35 = 0$ may have one common root. 6</p> <p>Ans <input checked="" type="checkbox"/> 1. 4, -4 <input checked="" type="checkbox"/> 2. 3, -2 <input checked="" type="checkbox"/> 3. 4, 3 <input checked="" type="checkbox"/> 4. 4, -2</p>	<p>Question ID : 473941545 Status : Answered Chosen Option : 1</p>
<p>Q.6 If $x - b$ is a factor of $F(x)$, then which of the following is TRUE? 7</p> <p>Ans <input checked="" type="checkbox"/> 1. $F(0) = b$ <input checked="" type="checkbox"/> 2. $F(1) = b$ <input checked="" type="checkbox"/> 3. $F(b) = 0$ <input checked="" type="checkbox"/> 4. $F(b) = 1$</p>	<p>Question ID : 473941511 Status : Answered Chosen Option : 3</p>
<p>Q.6 A bag contains 5 red balls, 8 white balls, 4 green balls and 7 black balls, if one ball is drawn at random, find the probability that it is black. 8</p> <p>Ans <input checked="" type="checkbox"/> 1. 5/24 <input checked="" type="checkbox"/> 2. 8/24 <input checked="" type="checkbox"/> 3. 7/24 <input checked="" type="checkbox"/> 4. 7/17</p>	<p>Question ID : 473941522 Status : Answered Chosen Option : 3</p>
<p>Q.6 Find the discriminant of $6x^2 + 5x + 7 = 0$. 9</p> <p>Ans <input checked="" type="checkbox"/> 1. 143 <input checked="" type="checkbox"/> 2. -143 <input checked="" type="checkbox"/> 3. 137 <input checked="" type="checkbox"/> 4. -137</p>	<p>Question ID : 473941543 Status : Answered Chosen Option : 2</p>
<p>Q.7 The fundamentals to knowing and doing mathematics: 0</p> <p>Ans <input checked="" type="checkbox"/> 1. Proof and Proving <input checked="" type="checkbox"/> 2. Thinking logically <input checked="" type="checkbox"/> 3. Knowing formulas <input checked="" type="checkbox"/> 4. Analysis and Reasoning</p>	<p>Question ID : 473941585 Status : Marked For Review Chosen Option : 3</p>
<p>Q.7 Let x_1, x_2 be the means of two samples of size n_1, n_2, then the mean \bar{X} of combined sample of size $n_1 + n_2$ is: 1</p> <p>Ans <input checked="" type="checkbox"/> 1. $\bar{X} = n_1 x_1 + n_2 x_2$</p>	<p>Question ID : 473941582 Status : Answered Chosen Option : 4</p>

$$\times^2. X = \frac{(n_1x_1 + n_2x_2)}{n_1 - n_2}$$

$$\times^3. X = \frac{(n_1x_1 \times n_2x_2)}{n_1 \times n_2}$$

$$\checkmark^4. X = \frac{(n_1x_1 \times n_2x_2)}{n_1 + n_2}$$

Q.7
2 $|x| < 2$ is equivalent to:

Ans $\checkmark^1. -2 < x < 2$

$\times^2. x < 2$

$\times^3. x > 2$

$\times^4. x \leq 2$

Question ID : 473941551

Status : Answered

Chosen Option : 1

Q.7
3 If $y = 2x + 5$ is the best fit for 8 pairs of values (x, y) by the method of least squares and $\Sigma y = 120$, then $\Sigma x =$ _____.

Ans $\times^1. 30$

$\times^2. 35$

$\times^3. 45$

$\checkmark^4. 40$

Question ID : 473941583

Status : Answered

Chosen Option : 4

Q.7
4 If α, β are the roots of the equation $4x^2 - 5x + 3 = 0$, then find $\alpha^2\beta + \alpha\beta^2$?

Ans $\times^1. -15/16$

$\checkmark^2. 15/16$

$\times^3. 13/16$

$\times^4. -13/16$

Question ID : 473941544

Status : Answered

Chosen Option : 2

Q.7
5 What are the roots of equation $x^3 - 5x^2 - 2x + 24 = 0$?

Ans $\times^1. 3, 3, 4$

$\checkmark^2. -2, 3, 4$

$\times^3. 2, -3, 4$

$\times^4. 2, 2, 4$

Question ID : 473941520

Status : Answered

Chosen Option : 1

Q.7
6 A cumulative frequency graph is a:

Ans $\times^1. \text{Straight line}$

$\times^2. \text{Parabola}$

$\times^3. \text{Bar graph}$

$\checkmark^4. \text{Curve}$

Question ID : 473941581

Status : Answered

Chosen Option : 4

Q.7
7 In a triangle ABC, $\angle BAC$ and $\angle BCA$ are complementary, then the largest side of the triangle is:

Ans $\times^1. 10 \text{ cm}$

Question ID : 473941577

Status : Answered

Chosen Option : 3

- 2. BC
- 3. AC
- 4. AB

Q.7 The line passing through $(-3, 1)$ and $(2, 1)$ lies in which of these quadrants?
8

- Ans
- 1. 3 and 4
 - 2. 1 and 4
 - 3. 2 and 3
 - 4. 1 and 2

Question ID : 473941562

Status : Answered

Chosen Option : 4

Q.7 $3x^2 + 11x + k = 0$ is an equation with reciprocal roots, what is the value of k ?
9

- Ans
- 1. 3
 - 2. 2
 - 3. 1
 - 4. 4

Question ID : 473941542

Status : Answered

Chosen Option : 1

Q.8 To compare the cost of different items in a menu, students need to be:
0

- Ans
- 1. Taken to different hotels
 - 2. Taken to a math lab
 - 3. Taken outside the classroom
 - 4. Taken to a nearby hotel

Question ID : 473941594

Status : Answered

Chosen Option : 1

Q.8 Most appropriate example for local and community resources while teaching the volume in the topic "Measurement" is:
1

- Ans
- 1. Cricket score
 - 2. Computers and Phones
 - 3. Pillows and Bed sheets
 - 4. Water tanks and Cylinders

Question ID : 473941600

Status : Answered

Chosen Option : 4

Q.8 Measuring the weights of ingredients will develop the skill of:
2

- Ans
- 1. Analyzing
 - 2. Measurement
 - 3. Cooking
 - 4. Calculating

Question ID : 473941595

Status : Answered

Chosen Option : 2

Q.8 The values of x by solving the trinomial $2x^2 + 9x - 5$ are:
3

- Ans
- 1. $1/5, 2$
 - 2. $-1/5, 2$
 - 3. $-1/2, 5$

Question ID : 473941533

Status : Answered

Chosen Option : 4

✓ 4. $1/2, -5$

Q.8 In a survey conducted on 250 persons it was found that 180 drink tea and 70 drink coffee and 50 take both tea and coffee. How many drink neither?

4

- Ans
- ✗ 1. 110
 - ✗ 2. 60
 - ✓ 3. 50
 - ✗ 4. 200

Question ID : 473941556

Status : Answered

Chosen Option : 3

Q.8 If A and B are mutually exclusive events with $P(B) \neq 1$, then $P(A/\bar{B}) = ?$

5

- Ans
- ✗ 1. $\frac{P(A)}{P(B)}$
 - ✓ 2. $\frac{P(A)}{1-P(B)}$
 - ✗ 3. $\frac{1}{P(B)}$
 - ✗ 4. $\frac{1}{1-P(B)}$

Question ID : 473941529

Status : Answered

Chosen Option : 2

Q.8 In the arithmetic progression 16, 32, 40, 52, 64 which number is written wrong?

6

- Ans
- ✗ 1. 40
 - ✗ 2. 64
 - ✗ 3. 52
 - ✓ 4. 32

Question ID : 473941546

Status : Not Attempted

Chosen Option : --

Q.8 One real root of the equation $x^3 + x - 2 = 0$ is:

7

- Ans
- ✗ 1. -1
 - ✗ 2. -2
 - ✓ 3. 1
 - ✗ 4. 2

Question ID : 473941518

Status : Answered

Chosen Option : 3

Q.8 The arc length of a sector is 4 cm. find the area of the sector if radius is 5 cm:

8

- Ans
- ✓ 1. 10 cm^2
 - ✗ 2. 20 cm^2
 - ✗ 3. 25 cm^2
 - ✗ 4. 40 cm^2

Question ID : 473941569

Status : Answered

Chosen Option : 1

Q.8 Sum of the natural numbers up to 'n', $1 + 2 + 3 + \dots + n =$ _____.

9

- Ans
- ✓ 1. $n(n+1)/2$
 - ✗ 2. $n(n-1)/2$
 - ✗ 3. $(n-1)/2$

Question ID : 473941506

Status : Answered

Chosen Option : 1

$$\times 4. (n+1)/2$$

Q.9
0 Two ships are sailing in the sea on the two sides of a lighthouse. The angle of elevation of the top of the lighthouse is observed from the ships are 30° and 45° respectively. If the lighthouse is 100 m high. What is the distance between the two ships?

- Ans
- 1. 173 m
 - 2. 100 m
 - 3. 273 m
 - 4. 373 m

Question ID : 473941527
Status : Answered
Chosen Option : 3

Q.9
1 Roots of the equation $x^2 - 9x + 6 = 0$ are:

- Ans
- 1. 9, 6
 - 2. 3, 2
 - 3. $\frac{9 \pm \sqrt{57}}{2}$
 - 4. $\frac{6 \pm \sqrt{69}}{2}$

Question ID : 473941531
Status : Answered
Chosen Option : 3

Q.9
2 If $A = \begin{bmatrix} 1 & 1 & -2 \\ 2 & 1 & -3 \\ 5 & 4 & -9 \end{bmatrix}$, find $|A|$.

- Ans
- 1. 3
 - 2. 0
 - 3. 1
 - 4. 2

Question ID : 473941509
Status : Answered
Chosen Option : 1

Q.9
3 A parallelogram is divided into two equal right angle triangles and a rectangle. If the hypotenuse of the triangles is equal to 5 cm and the length of rectangle is equal to 6 cm. find the area of parallelogram.

- Ans
- 1. 40 cm^2
 - 2. 20 cm^2
 - 3. 30 cm^2
 - 4. 60 cm^2

Question ID : 473941559
Status : Answered
Chosen Option : 2

Q.9
4 If $A^2 = A$ then the matrix A is:

- Ans
- 1. Skew Symmetric
 - 2. Symmetric
 - 3. Singular
 - 4. Idempotent

Question ID : 473941530
Status : Answered
Chosen Option : 3

Q.9
5 A sphere of radius 3 cm has a volume of:

- Ans
- 1. $24\pi \text{ cm}^2$
 - 2. $48\pi \text{ cm}^2$

Question ID : 473941567
Status : Answered
Chosen Option : 2

✓ 3. $36\pi \text{ cm}^2$

✗ 4. $12\pi \text{ cm}^2$

Q.9 The fear and sense of failure among many students of mathematics is due to:
6

- Ans
- ✗ 1. The nature of students
 - ✗ 2. The nature of teacher
 - ✗ 3. The nature of subject
 - ✓ 4. The nature of classroom

Question ID :473941596

Status : Not Attempted

Chosen Option :--

Q.9 Find the remainder for $f(x) = 3x^2 - 5x^3 + 57$ when divided by $(x + 2)$
7

- Ans
- ✗ 1. 2
 - ✗ 2. 0
 - ✗ 3. 3
 - ✓ 4. 1

Question ID :473941532

Status : Not Attempted

Chosen Option :--

Q.9 If 'a' and 'b' are any two whole numbers then $(-a)^3 \times (-b)^3$ will be:
8

- Ans
- ✓ 1. $(ab)^3$
 - ✗ 2.
 - May be '0' or $(ab)^3$ or $-(ab)^3$
 - ✗ 3. $-(ab)^3$
 - ✗ 4. 0

Question ID :473941524

Status : Not Attempted

Chosen Option :--

Q.9 Consider three points a, b, c on a circle, points a and b make an angle 40° at c, then what is the angle made by a and b at the center?
9

- Ans
- ✗ 1. 40°
 - ✓ 2. 80°
 - ✗ 3. 60°
 - ✗ 4. 100°

Question ID :473941576

Status : Not Attempted

Chosen Option :--

Q.1 In order to encourage the development of meaning and understanding a teacher should believe that:
00

- Ans
- ✓ 1. Learners actively construct knowledge
 - ✗ 2. Learners listen to the teacher carefully
 - ✗ 3. Learners passively receive information
 - ✗ 4. Learners learn by listening actively

Question ID :473941603

Status : Not Attempted

Chosen Option :--